

Fulflo® FE Filter Vessel

ASME code designed for economical filtration of liquids and gases

Fulflo FE multi-cartridge filter vessels meet a broad range of liquid and gas applications. It comes with standard zinc plated bolts and legs for corrosion resistance but is also offered with stainless steel options. Wall mounting brackets are available as well.

The FE filter vessels accommodate double-open-end (DOE) and single-open-end (SOE) filter cartridges in 10 inch, 20 inch, and 30 inch lengths.



Contact Information

Parker Hannifin Corporation
Industrial Process Filtration - N.A.
118 Washington Avenue
Mineral Wells, TX 76067

phone +1 940 325 2575
industrialprocess.na@parker.com

www.parker.com/industrialprocess

Benefits

- Single O-ring design closure assures quick, positive cover sealing
- Swing bolts with eyenuts for fast, easy opening and closing of cover
- Dual purpose cartridge seats for use with DOE and 2-222 O-ring SOE cartridges
- ASME Code UM stamp is standard (U stamp is optional)
- Threaded vent & drain connections
- Adjustable leg height
- Threaded or flanged inlet and outlet
- Side inlet; cover opens without disconnecting piping
- Side inlet, bottom outlet and crevice-free welded design provide a smooth interior for easy wash-out and cleaning

Applications

- Potable Water
- Process Water
- Coatings
- Lubricants
- Coolants
- Cutting Oils
- Solvents



ENGINEERING YOUR SUCCESS.

Fulflo® FE Filter Vessel

Design Specifications

Model	Cartridge No. & Length (in)	Aqueous Flow† (gpm)	Typical Dimensions (in)					Shipping Wt. (lbs)	Volume (gal)
			A	B	C	D	E**		
FE6-1-2	6 (10)	30	33.00	5.75	25.56	13.19	2 NPT	82	3.6
FE6-1-2F	6 (10)	30	33.00	8.00	25.56	12.00	2 NPS	90	3.6
FE6-2-2	6 (20)	60	43.06	5.75	35.63	13.19	2 NPT	87	5.4
FE6-2-2F	6 (20)	60	43.06	8.00	35.63	12.00	2 NPS	95	5.4
FE6-3-2	6 (30)	90	53.13	5.75	45.69	13.19	2 NPT	92	7.8
FE6-3-2F	6 (30)	90	53.13	8.00	45.69	12.00	2 NPS	100	7.8
FE6-3-3F	6 (30)	90	53.13	8.00	45.69	11.75	3 NPS	110	7.8

† Actual rate is dependent on fluid viscosity, micron rating, contaminant and media type. Consult flow charts for each application.

** NPT - ANSI Class 3000# Thread Couplings / NPS - ANSI Class 150# Slip-on Flanges

Maximum Operating Conditions

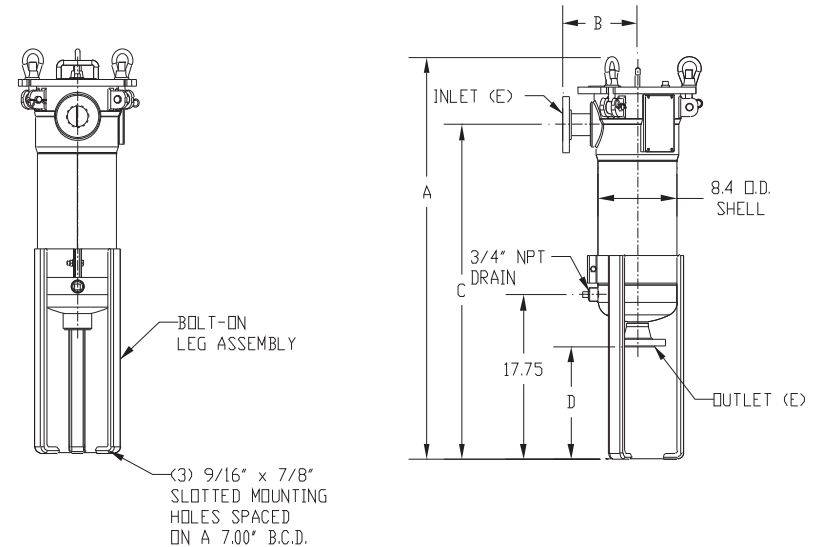
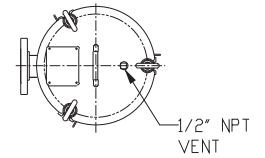
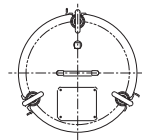
Material of Construction	Max. Allowable Pressure (MAP) (psi @ MAT °F)	Max. Allowable Temp. (MAT) (°F @ MAP psi)
Carbon Steel	150psi (10.3bar)	450°F (232°C)* **
304L Stainless	150psi (10.3bar)	450°F (232°C)**
316L Stainless	150psi (10.3bar)	450°F (232°C)**

* Limited to 250°F by the paint

** Limited to 250°F by the standard Buna-N O-ring

Optional Shell O-Ring/Gasket*	
Material	Part #
Nitrile/Buna-N (Std.)	4151-1371
EPDM	4154-5371
Silicone	4150-5537
FKM (Viton®)	4152-8371
Fluoropolymer	4151-5371

* Optional O-ring shipped separately



Ordering Information



Material of Construction		Cartridge Qty.		Cartridge Length		Connection Size		Connection Type		Support Options	
Code	Description	Code	Amount	Code	Inches	Code	Inches	Code	Description	Code	Description
None	Carbon Steel	6	6	1	10	2	2	Blank	NPT	Blank	Zinc plated carbon steel legs
4L	304L Stainless Steel			2	20	3	3	F	ANSI 150 lb. flange	SL	304 Stainless steel legs
6L	316L Stainless Steel			3	30					SB	316 Stainless steel cover bolts
										SS	Stainless steel bolts & legs

Specifications are subject to change without notification.
For User Responsibility Statement, see www.parker.com/safety

© 2017 Parker-Hannifin Corporation
Industrial Process Filtration - North America
All Rights Reserved

Fulflo is a registered trademark of Parker-Hannifin Corporation
Viton is a registered trademark of E.I. DuPont de Nemours & Co., Inc.

