

ATEX HAZARDOUS-AREA RATED CONTAINER HEATERS AND CONTROLLER

Hazardous-area rated for Gas And Dust

Suitable for use in outdoor and wet environments - IP 65



- Drum Heaters
- IBC Heaters
- Gas Bottle Warmers
- Digital Controllers

ATEX HEATERS FOR BULK STORAGE CONTAINERS

- Drum Heaters
- IBC Heaters
- Gas Bottle Warmers

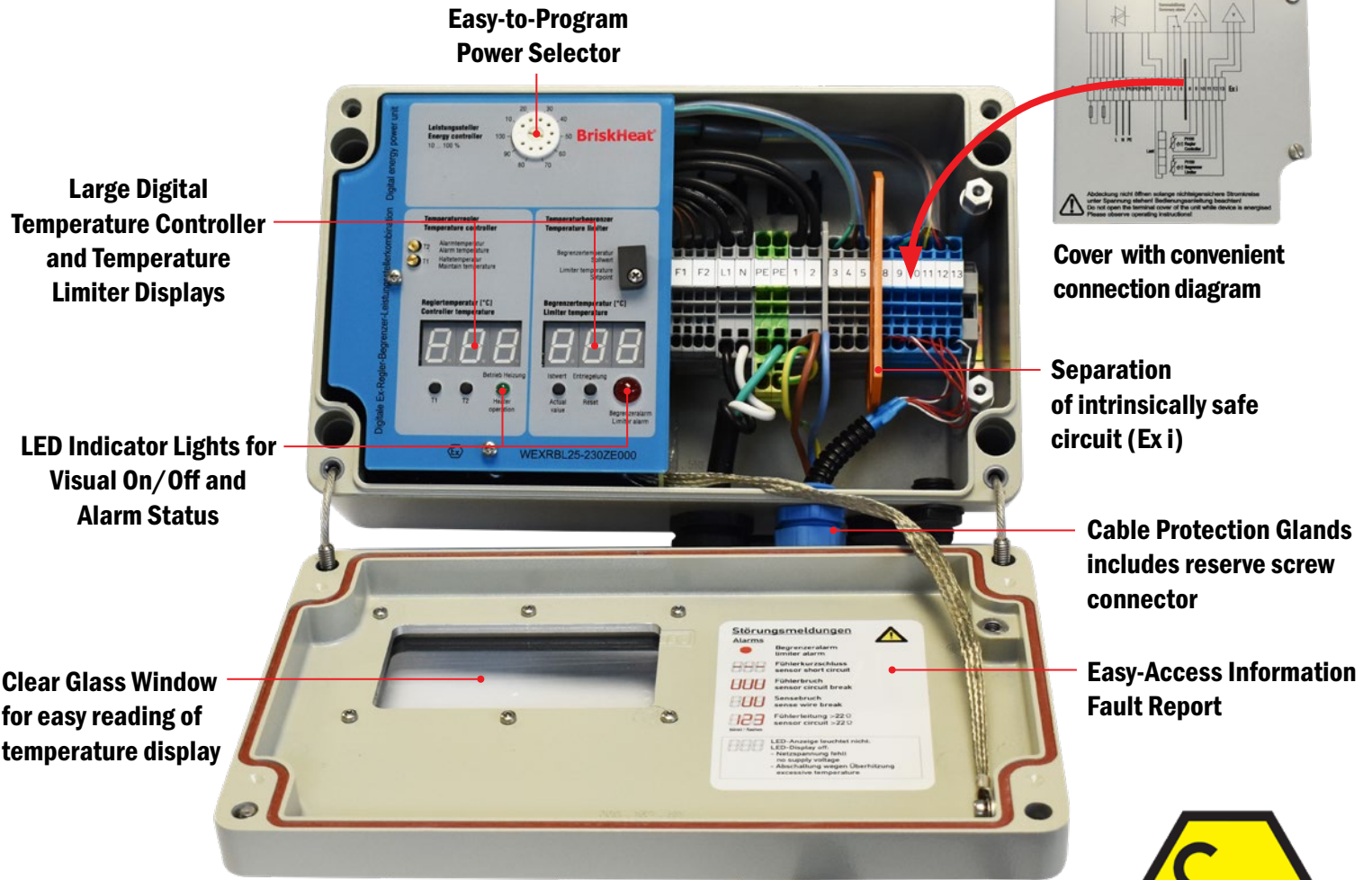


Product Features:

- **ATEX Certified:**
Zones 1/2 (gas) 21/22 (dust)
- **Suitable for use in outdoor and wet environments - IP 65**
- **Wide range of applications:**
Viscosity control, Freeze Protection, Temperature Maintenance
- **Operating Temperature:**
Up to 200°C (392°F) - T3
- **2-RTD sensor system:**
Process control temperature, high limit temperature



ATEX DIGITAL CONTROLLER WITH LIMITER

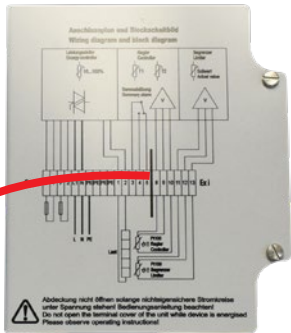


Large Digital Temperature Controller and Temperature Limiter Displays

LED Indicator Lights for Visual On/Off and Alarm Status

Clear Glass Window for easy reading of temperature display

Easy-to-Program Power Selector



Cover with convenient connection diagram

Separation of intrinsically safe circuit (Ex i)

Cable Protection Glands includes reserve screw connector

Easy-Access Information Fault Report



Product Features:

- ATEX Certified
- Controller and limiter in one enclosure
- On/Off control
- Robust aluminum enclosure rated IP64 with mounting plate and hardware
- 2 RTD sensor connections (control and limit)
- Sensor break and short circuit signal indicators
- 230 VAC Nominal Voltage
- Versatile 25 amp load capacity
- Compact Design: 260 mm x 160 mm x 135 mm (10.2 in x 6.3 in x 5.3 in)
- Operating temperature: 0-450°C (32-842°C)

For Use with ATEX Drum Heaters, IBC Heaters, and Gas Bottle Warmers

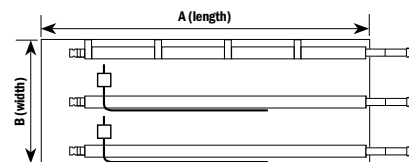


ATEX HEATERS AND CONTROLLER

Ordering Information:

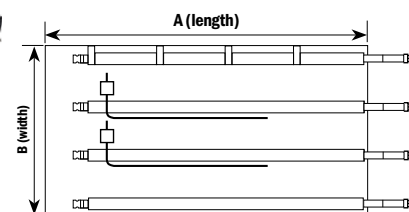
ATEX Full-Coverage Drum Heater:

Capacity	A (Length)	B (Height)	C (Circumference)	Part No.
200-220 litre (55 gal)	2100 mm (87.7 in)	800 mm (31.5 in)	1800-2100 mm (70.9 - 87.7 in)	WEXHD200-230ZE800-0210BHT3



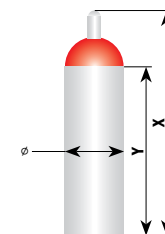
ATEX Wrap-Around IBC TOTE Tank Heater:

Capacity	A (Total length)	B (Height)	(Heated length)	Part No.
1000 litre (250 gal)	4400 mm (173.2 in)	1000 mm (39.4 in)	3900 mm (153.4 in)	WEXHCIBC-230ZE100-0440BHT3
IBC Tote Tank cover: minimizes heat loss and improves efficiency				WEXHIIBC-0000BHT3



ATEX Gas Cylinder Warmers:

Capacity	X (Total Height)	Y (Cylinder Height)	∅ (Diameter)	Part No.
10 litre	1010 mm (39.4 in)	800 mm (31.5 in)	140 mm (5.5 in)	WEXHB010-230ZE140-0080BHT3
50 litre	1670 mm (65.7 in)	1400 mm (55.1 in)	230 mm (9.1 in)	WEXHB050-230ZE230-0140BHT3
79 litre	1290 mm (50.8 in)	1000 mm (39.4 in)	318 mm (12.5 in)	WEXHB079-230ZE318-0100BHT3



ATEX Controller:

Nominal Voltage	Sensor Input	Temperature Range	Amps	Part No.
230 VAC	PT100 RTD	0°C to 450°C (32°F to 842°F)	25	WEXRBL25-230ZESBH

