

# Fulflo® FP Filter Vessel

ASME code design for economical liquid filtration

Fulflo® FP single or double round filter vessels meet a broad range of liquid applications. It is designed for use with the Fulflo® Flo-Pac 718 and 736 pleated filter cartridge series.



## Contact Information

Parker Hannifin Corporation  
**Industrial Process Filtration - N.A.**  
118 Washington Avenue  
Mineral Wells, TX 76067

phone +1 940 325 2575  
industrialprocess.na@parker.com

[www.parker.com/industrialprocess](http://www.parker.com/industrialprocess)

## Benefits

- Single O-ring design closure assures quick, positive cover sealing
- Swing bolts with eye-nuts for fast, easy opening and closing of cover
- ASME Code UM stamp is standard (U stamp is optional)
- Threaded vent & drain connections
- Adjustable leg height
- Threaded or flanged inlet and outlet options
- Side inlet, bottom outlet and crevice-free welded design provide a smooth interior for easy wash-out and cleaning

## Applications

- Process Water
- Coatings
- Lubricants
- Coolants
- Cutting Oils
- Solvents
- EDM



ENGINEERING YOUR SUCCESS.

# Fulflo® FP Filter Vessel

## Design Specifications

Model	Cartridge No. & Length (in.)	Typical Aqueous Flow† (gpm)	Dimensions (in.)					Shipping Weight (lbs)	Volume (gal)
			A	B	C	D	E††		
FP1-1-2	(1) 18	50	42.56	5.75	35.13	13.19	2 NPT	112	5.5
FP1-1-2F	(1) 18	50	42.56	8.00	35.13	12.00	2 NPS	120	5.5
FP1-2-2	(2) 18	100	60.56	5.75	53.13	13.19	2 NPT	132	9.6
FP1-2-2F	(2) 18	100	60.56	8.00	53.13	12.00	2 NPS	140	9.6
FP1-2-3F	(2) 18	100	60.56	8.00	53.13	11.75	2 NPS	150	9.6

†Actual rate is dependent on fluid viscosity, micron rating, contaminant and media type. Consult flow charts for each application.

†† NPT - ANSI Class 3000# Thread Couplings / NPS - ANSI Class 150# Slip-on Flanges

## Maximum Operating Conditions

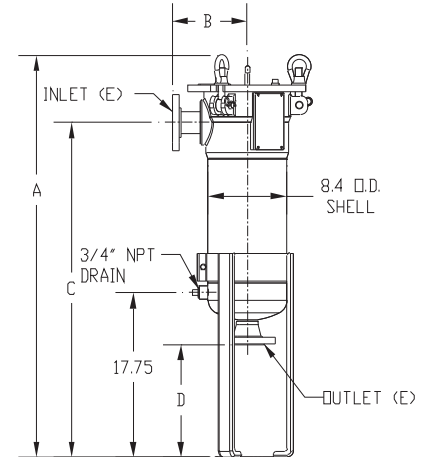
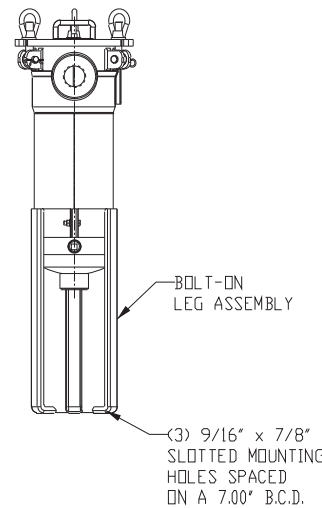
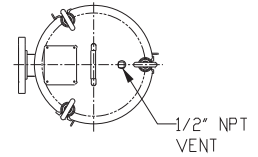
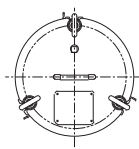
Material of Construction	Max. Allowable Pressure (MAP) (psi @ MAT °F)	Max. Allowable Temp. (MAT) (°F @ MAP psi)
Carbon Steel	150psi (10.3bar)	450°F (232°C) **
304L Stainless	150psi (10.3bar)	450°F (232°C)**

\*Limited to 250°F by the paint

\*\*Limited to 250°F by the standard Buna-N O-ring

Optional Shell O-Ring/Gasket*	
Material	Part #
Nitrile/Buna-N (Std.)	4151-1371
EPDM	4154-5371
FKM (Viton®)	4152-8371
Fluoropolymer	4151-5371

\*Optional O-ring shipped separately



## Ordering Information

Material of Construction		Cartridge Qty.		Cartridge Length		Connection Size		Connection Type	
Code	Description	Code	Columns	Code	Inches	Code	Inches	Code	Description
None	Carbon Steel	1	1	1	18	2	2	Blank	NPT
4L	304L Stainless Steel			2	36	3	3	F	ANSI 150 lb. flange

Specifications are subject to change without notification.  
For User Responsibility Statement, see [www.parker.com/safety](http://www.parker.com/safety)

© 2017 Parker-Hannifin Corporation  
Industrial Process Filtration - North America  
All Rights Reserved

Fulflo is a registered trademark of Parker-Hannifin Corporation  
Viton is a registered trademark of E.I. DuPont de Nemours & Co., Inc.



DS\_IP\_FP Vessel Rev. B