

HEATING CABLE AND INSULATION

Introduction to Heating Cable and Insulation Solutions

Complete Electric Heat-Tracing Systems including:

- ▶ Heating Cable
- ▶ Power Connection Kits
- ▶ Monitoring Lights
- ▶ Insulation
- ▶ Temperature Control



Self-Regulating Heating Cable

- ▶ Automatically adjusts heat output based on surface temperature
- ▶ Ideal for freeze protection and low temperature maintenance applications
- ▶ Safe to overlap
- ▶ Temperatures up to 250 °F (121 °C)

Starting on page
1-4



SpeedTrace (Pre-terminated with plug)



Roof and Gutter Kits



Cut-to-Length Self-Regulating Heating Cable



Wide range of Power Connection and Monitoring Light Kits

Constant-Wattage Heating Cable

- ▶ Ideal for process temperature applications where a specific temperature is required: power remains constant regardless of ambient temperature
- ▶ Temperatures up to 500 °F (260 °C)



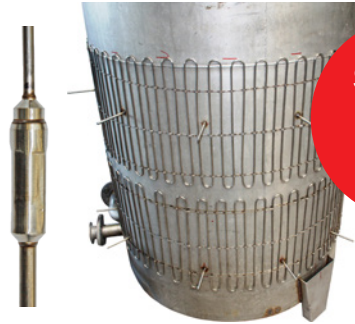
Starting on page
1-28

HEATING CABLE AND INSULATION

Introduction to Heating Cable and Insulation Solutions

Mineral Insulated (MI) Heating Cable

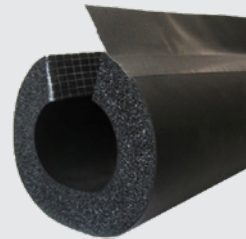
- ▶ High temperature capabilities up to 1832° F (1000° C)
- ▶ Metal sheath is highly corrosion resistant
- ▶ Custom-made to your exact requirements



Starting
on page
1-36

INSUL-LOCK® DS Closed Cell Pipe Insulation

- ▶ Economical insulating solution for a wide variety of pipe applications
- ▶ Compatible with heating cable and tapes



Starting
on page
1-38

Silver-Series Removable Cloth Insulators

- ▶ Removable and reusable – Easy-to-install and reuse
- ▶ Configurable system for a wide range of pipe and tank systems
- ▶ Thermally-efficient fiberglass insulation – 1 in (25 mm) thick



Starting
on page
1-39

Temperature Controls

- ▶ Wide range of temperature controls to fit your application
- ▶ Single zone, multi-zone, outdoor-rated, and hazardous-area rated options



Starting
on page
8-1