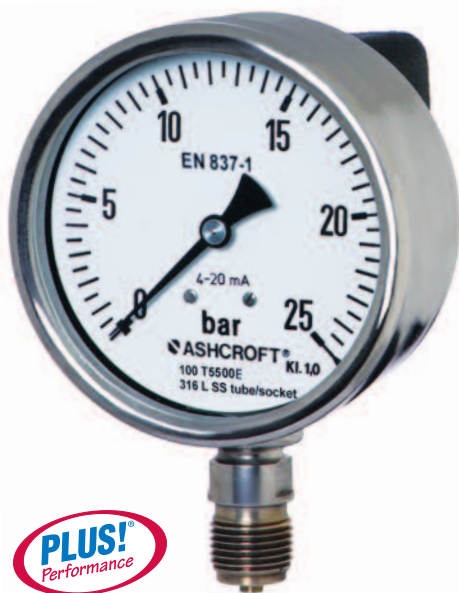


Type T5500E Process Gauge with Output



FEATURES:

- *Integrated Pressure Transmitter*
- *Rugged Stainless Steel Construction*
- *Welded Socket and Case*
- *IP65 Protection*
- *4-20 mA Output*
- *Selection of Measurement Units (psi, bar, kilopascal)*

APPLICATIONS:

- *Power Plants*
- *Chemical Processing*
- *Refineries*
- *Pulp and Paper*
- *Food and Beverage*

The T5500E combines the operation of a process gauge and pressure transmitter while reducing the associated costs for two instruments. Offering polysilicon thin film technology, it can be integrated into safety and data acquisition systems. An all stainless steel design provides further protection as it is robust and suitable for aggressive environments and process fluids.

PRODUCT SPECIFICATIONS

Gauge & Output

Accuracy	0.50% Full Scale
Response Time:	</= 1ms
Repeatability:	</= +/-0.3% Compound F.S.
Standard	
Ranges (Gauge):	-30" Hg/0 to 0/20,000 psi (-1/0 to 0/1600 bar)

MECHANICAL SPECIFICATIONS

Dial Size:	4" (100mm)
Bourdon	
Tube/Socket:	316L Stainless Steel
Sensor Material:	17-4PH Stainless Steel
Movement:	303/304 Stainless Steel
Pressure	
Connections:	¼ NPT Male ½ NPT Male
Connection Location:	Lower
Case Material:	304L SS, (Std.)/316L SS (Opt.)
Rating:	IP65
Electrical	
Connection:	See 'Order Information – Electrical Termination' on next page
Weight:	2.68 lbs. (1.0 kg)
Ring:	Bayonet
Vent Plug:	Top
Dial:	Aluminum, White-coated
Pointer:	Aluminum, Black Micrometer
Window:	Safety Glass (Std.)/Acrylic (Opt.)

ELECTRICAL SPECIFICATIONS

Power Supply

Requirements:	Supply Voltage: 12-30 Vdc
Supply Current:	Max. 20 mA
Output Signal:	4-20 mA
Isolation Voltage:	350 Vac

Maximum Loop

Resistance:	</= (UB – 9.5 V)/0.02 A
--------------------	-------------------------

Case & Electrical

Termination Isolation:	> 1 M ohm @ 50 Vdc
-------------------------------	--------------------

ENVIRONMENTAL SPECIFICATIONS

Temperature Limits:

Storage:	-40/185F (-40/85C)
Process:	-13/185F (-25/85C)
Compensated:	-4/158F (-20/70C)

Temperature

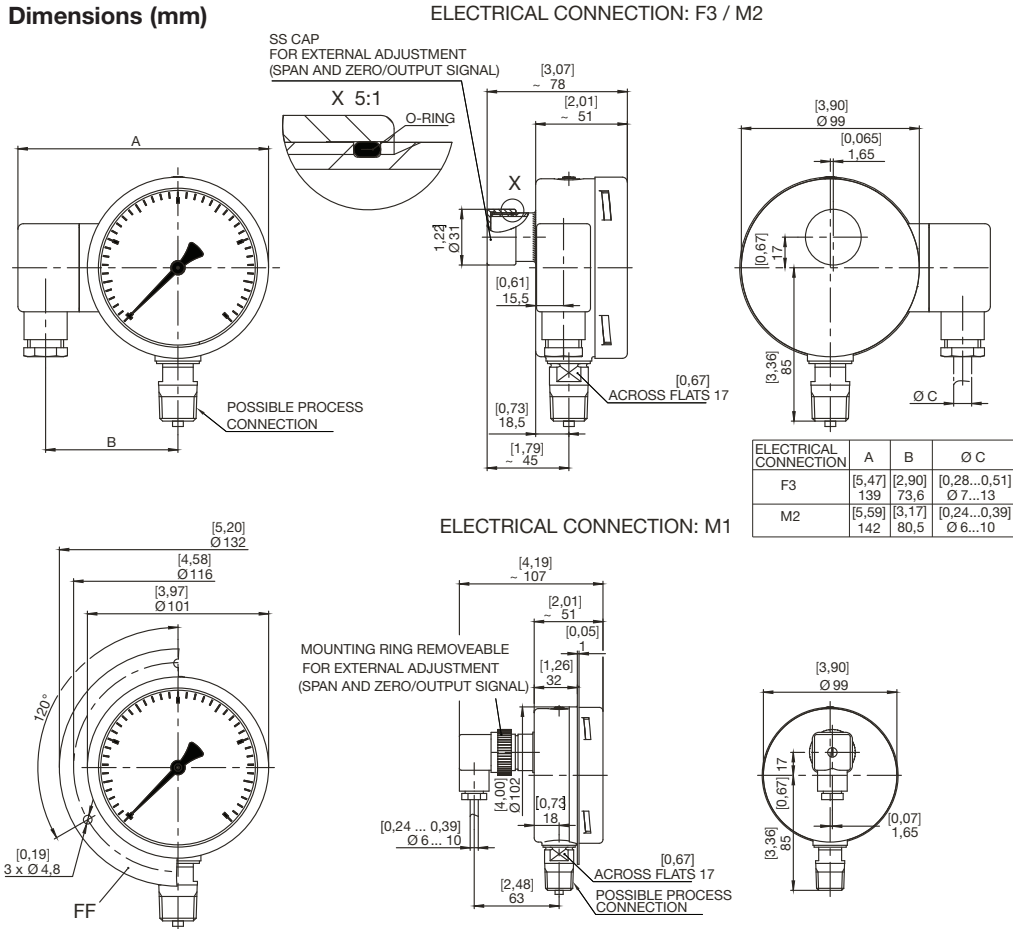
Effects:	+/-0.3%/ 10K from 0/50C (32/122F)
-----------------	--------------------------------------

OPTIONS

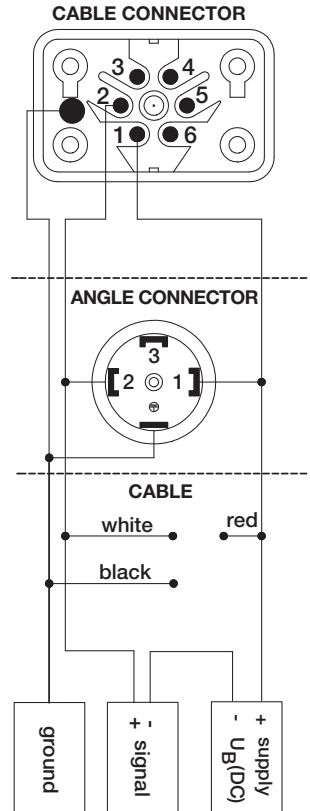
See 'Order Information – Options on next page

Type T5500E Process Gauge with Output

Dimensions (mm)



Electrical Connection



Ordering Code Sample:



Order Information

DIAL SIZE	TYPE	PROCESS CONNECTION & LOCATION	ELECTRICAL TERMINATION	SINGLE SCALE PRESSURE RANGES				OPTIONS (X VARIATIONS)
				psi (#)	Kg/cm	Bar	kPa	
(10) 100mm (4")	(T5500E) Process Gauge with Integrated Transmitter	(02L) 1/4 NPT (04L) 1/2 NPT	(F3) Type B Universal Box Cable Connector, Left Side Mount (M1) DIN EN 175301-803 Angle Connector, Back-mounted (M2) DIN EN 175301-803 Angle Connector, Left-side mount	30"Hg/0*	-1/0*	-1/0*	-100/0*	(EP) Maximum pointer, adjustable
				30"Hg/0/15	-1/0/1	-1/0/1	-100/0/100	(SH) Red set hand, stationary
				30"Hg/30	-1/0/2	-1/0/2	-100/0/200	(LL) PLUS! Performance
				0/15	0/1	0/1	0/160	(C4) Individual calibration chart
				0/30	0/1.6	0/1.6	0/250	(NH) St. St. Wired Tag
				0/60	0/2.5	0/2.5	0/400	(PD) Acrylic window
				0/100	0/4	0/4	0/600	(FF) Front Flange**
				0/160	0/6	0/6	0/1000	(OS) Overload Stop
				0/200	0/10	0/10	0/1600	(VS) Underload Stop
				0/300	0/16	0/16	0/2500	(TS) Throttle screw
				0/400	0/25	0/25	0/4000	(YW) 316L St. St. Case
				0/600	0/40	0/40	0/6000	
				0/800	0/60	0/60	0/10,000	
				0/1000	0/100	0/100	0/16,000	
				0/1500	0/160	0/160	0/25,000	
				0/2000	0/250	0/250	0/40,000	
0/3000	0/400	0/400	0/60,000					
0/5000	0/600	0/600	0/100,000					
0/10,000	0/1000	0/1000	0/160,000					
0/20,000	0/1600	0/1600						

*XLL NOT AVAILABLE

**Only available with M1 connection

All specifications are subject to change without notice.
 All sales subject to standard terms and conditions.
 © Ashcroft Inc. 2015 Rev. 07/15

Ashcroft Inc., 250 East Main Street, Stratford, CT 06614 USA
 Tel: 203-378-8281 • Fax: 203-385-0408
 email: info@ashcroft.com • www.ashcroft.com