

SELF-REGULATING HEATING CABLE

Self-Regulating Heating Cable (SLCBL Series)

- ▶ **Ideal for freeze protection, roof and gutter de-icing, snow melting systems, and low temperature process maintenance up to 150°F (65°C)**
- ▶ **Automatically adjusts heat output based on surface temperature**
- ▶ **Safe to overlap and insulate**
- ▶ **Can be cut-to-length and terminated in the field**
- ▶ **Moisture, chemical, and flame resistant**

Specifications:

Maximum Continuous Maintenance Temperature: 150°F (65°C)

Intermittent Exposure Temperature Range: -40°F to 185°F (-40°C to 85°C)

Nominal Power Output at 50°F (10°C): 3, 5, 8, 10, 12 W/ft (10, 16, 26, 33, 39 W/m)

Supply Voltages: 110-120 VAC or 208-277 VAC

Bus Wire Gauge: 16 AWG

Braid Resistance: Tinned copper 0.0055 ohms/ft (0.0182 ohms/m)

T-Rating:

T6: 3, 5, 8, 10 W/ft (10, 16, 26, 33 W/m)

T5: 12 W/ft (39 W/m)

Bend Radius: 0.5 in (12 mm)

NOTE: Electrical equipment T-Rating codes define the maximum surface temperature that equipment will reach. It is used in hazardous (classified) area applications.

Ordering Information:

Part Number Matrix

SLCBL	3	120	BP
--------------	----------	------------	-----------

Watts/ft: 3, 5, 8, 10, 12

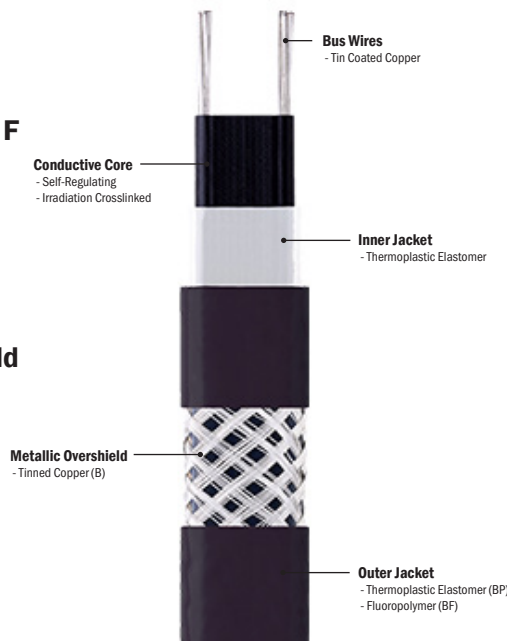
Voltage: 120- (110-120 V), 240- (208-277 V)

Outer Layer:

B- (Tinned Copper Metal Braid)

BP- (Tinned Copper Metal Braid with Thermoplastic Elastomer Overjacket)

BF- (Tinned Copper Metal Braid with Fluoropolymer Overjacket)



Maintenance Temperatures Up to 149°F (65°C)



Moisture and Chemical Resistant



Ordinary Locations
-B, -BP Series Only

Embedded de-icing and snow melting systems
-BP Series only

Roof and gutter de-icing and snow melting systems
-BP Series only



Ordinary Locations
Hazardous (Classified) Locations
Class I, Division 2, Groups A, B, C, D
Class II, Division 2, Groups E, F, G
Class III



Approvals valid only when used with appropriate heating cable and installation accessories, and installed in accordance with all applicable instructions, codes, and regulations.

Complete Your System with:

Component	Starting at Page
Power Connection/Termination Kits	1-17
Monitor Light Kits	1-16
Insulation	1-38
Temperature Controls	8-1

SELF-REGULATING HEATING CABLE

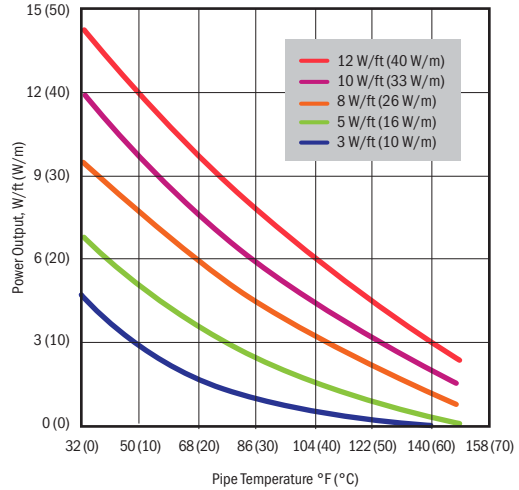
**Self-Regulating Heating Cable
(SLCBL Series)**

Maximum Circuit Length in ft (m)

Heating Cable	Circuit Breaker Size	Start-up Temperature			
		50°F (10°C)	32°F (0°C)	-4°F (-20°C)	-40°F (-40°C)
SLCBL3120	10 amp	240 (73)	200 (61)	140 (43)	115 (35)
	15 amp	320 (98)	300 (91)	220 (67)	190 (58)
	20 amp	330 (101)	320 (98)	265 (81)	225 (69)
	30 amp	330 (101)	320 (98)	280 (85)	265 (81)
	40 amp	330 (101)	320 (98)	280 (85)	265 (81)
SLCBL3240	10 amp	485 (148)	396 (121)	275 (84)	232 (71)
	15 amp	643 (196)	606 (185)	436 (133)	377 (115)
	20 amp	660 (201)	643 (196)	530 (162)	449 (137)
	30 amp	660 (201)	643 (196)	557 (170)	530 (162)
	40 amp	660 (201)	643 (196)	557 (170)	530 (162)
SLCBL5120	10 amp	162 (49)	135 (41)	105 (32)	80 (24)
	15 amp	249 (76)	215 (66)	170 (52)	127 (39)
	20 amp	265 (81)	252 (77)	215 (66)	164 (50)
	30 amp	265 (81)	252 (77)	240 (73)	200 (61)
	40 amp	265 (81)	252 (77)	240 (73)	200 (61)
SLCBL5240	10 amp	324 (99)	269 (82)	209 (64)	160 (49)
	15 amp	498 (152)	429 (131)	337 (103)	255 (78)
	20 amp	530 (162)	505 (154)	433 (132)	328 (100)
	30 amp	530 (162)	505 (154)	480 (146)	400 (122)
	40 amp	530 (162)	505 (154)	480 (146)	400 (122)
SLCBL8120	10 amp	123 (38)	100 (31)	54 (17)	52 (16)
	15 amp	177 (54)	145 (44)	90 (27)	82 (25)
	20 amp	200 (61)	180 (55)	115 (35)	103 (31)
	30 amp	210 (64)	180 (55)	175 (53)	135 (41)
	40 amp	210 (64)	180 (55)	175 (53)	160 (49)
SLCBL8240	10 amp	246 (75)	203 (62)	108 (33)	104 (32)
	15 amp	354 (108)	291 (89)	183 (56)	164 (50)
	20 amp	406 (124)	360 (110)	229 (70)	206 (63)
	30 amp	420 (128)	360 (110)	350 (107)	275 (84)
	40 amp	420 (128)	360 (110)	350 (107)	320 (98)
SLCBL10120	10 amp	75 (23)	55 (17)	45 (14)	35 (11)
	15 amp	121 (37)	85 (26)	65 (20)	55 (17)
	20 amp	150 (46)	105 (32)	80 (24)	70 (21)
	30 amp	155 (47)	120 (37)	105 (32)	85 (26)
	40 amp	180 (55)	155 (47)	105 (32)	105 (32)
SLCBL10240	10 amp	147 (45)	111 (34)	85 (26)	68 (21)
	15 amp	242 (74)	177 (54)	131 (40)	114 (35)
	20 amp	295 (90)	216 (66)	164 (50)	141 (43)
	30 amp	315 (96)	246 (75)	215 (66)	170 (52)
	40 amp	360 (110)	315 (96)	215 (66)	215 (66)
SLCBL12120	10 amp	55 (17)	40 (12)	30 (9)	25 (8)
	15 amp	90 (27)	60 (18)	45 (14)	45 (14)
	20 amp	115 (35)	80 (24)	60 (18)	50 (15)
	30 amp	115 (35)	90 (27)	80 (24)	60 (18)
	40 amp	120 (37)	105 (32)	80 (24)	80 (24)
SLCBL12240	10 amp	111 (34)	78 (24)	59 (18)	49 (15)
	15 amp	183 (56)	124 (38)	91 (28)	85 (26)
	20 amp	229 (70)	160 (49)	124 (38)	98 (30)
	30 amp	229 (70)	180 (55)	158 (48)	120 (37)
	40 amp	240 (73)	210 (64)	158 (48)	158 (48)

Note: Special consideration must be given for the circuit breaker due to the high initial in-rush currents.

Heat Output — Watts/Ft (Watts/m)



Outer Layer Options:

Product Type	Description	Nominal Dimensions [thickness x width] in (mm)	Shipping Weight: 500 ft (152 m) spool lbs (kg)	Purpose
SLCBL-B	Tinned Copper Metal Braid	0.17 x 0.43 (4.4 x 11.0)	35 (16)	Dry Environments
SLCBL-BP	Tinned Copper Metal Braid with Thermoplastic Elastomer Overjacket	0.23 x 0.50 (6.0 x 12.6)	46 (21)	Wet or Weak Chemical Environments
SLCBL-BF	Tinned Copper Metal Braid with Fluoropolymer Overjacket	0.21 x 0.47 (5.4 x 12.0)	44 (20)	Wet or Harsh Chemical Environments

Voltage Adjustment Factors:

Watt/ft Output Adjustment Factor		
Product Type	208 VAC	277 VAC
SLCBL3240	0.82	1.13
SLCBL5240	0.85	1.12
SLCBL8240	0.89	1.08
SLCBL10240	0.89	1.08
SLCBL12240	0.89	1.08

Max Circuit Length Adjustment Factor		
Product Type	208 VAC	277 VAC
SLCBL3240	0.96	1.08
SLCBL5240	0.94	1.09
SLCBL8240	0.92	1.11
SLCBL10240	0.92	1.11
SLCBL12240	0.92	1.11

SELF-REGULATING HEATING CABLE

Mid-Temperature Self-Regulating Heating Cable (SLMCBL Series)

- ▶ **Ideal for freeze protection and mid temperature process maintenance up to 230 °F (110 °C)**
- ▶ **Automatically adjusts heat output based on surface temperature**
- ▶ **Safe to overlap and insulate**
- ▶ **Can be cut-to-length and terminated in the field**
- ▶ **Moisture, chemical, and flame resistant**

Specifications:

Maximum Continuous Maintenance Temperature: 230°F (110°C)

Intermittent Exposure Temperature Range: -22°F to 275°F (-30°C to 135°C)

Nominal Power Output at 50°F (10°C): 5, 10, 15, 20 W/ft, (16, 33, 49, 66 W/m)

Supply Voltages: 110-120 VAC or 208-277 VAC

Bus Wire Gauge: 16 AWG

Braid Resistance: Tinned copper 0.0055 ohms/ft (0.0182 ohms/m)

Bend Radius: 0.5 in (12 mm)



Moisture and Chemical Resistant



Temperatures Up to 230 °F (110 °C)



Ordering Information:

Part Number Matrix

SLMCBL	5	120	BP
--------	---	-----	----

Watts/ft: 5, 10, 15, 20

Voltage: 120- (110-120 V), 240- (208-277 V)

Outer Layer:

- B- (Tinned Copper Metal Braid)
- BP- (Tinned Copper Metal Braid with Thermoplastic Elastomer Overjacket)
- BF- (Tinned Copper Metal Braid with Fluoropolymer Overjacket)

Complete Your System with:

Component	Starting at Page
Power Connection/Termination Kits	1-17
Monitor Light Kits	1-16
Insulation	1-38
Temperature Controls	8-1

SELF-REGULATING HEATING CABLE

Mid-Temperature Self-Regulating Heating Cable

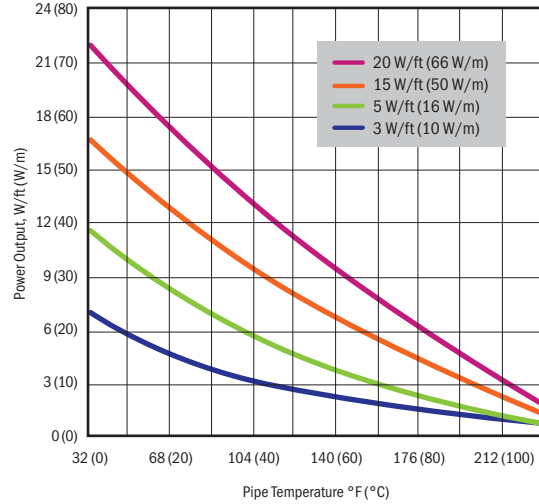
(SLMCBL Series)

Maximum Circuit Length in ft (m)

Heating Cable	Circuit Breaker Size	Start-up Temperature			
		50°F (10°C)	32°F (0°C)	-4°F (-20°C)	-40°F (-40°C)
SLMCBL5120	10 amp	110 (34)	80 (24)	-	-
	15 amp	133 (41)	105 (32)	98 (30)	90 (27)
	20 amp	195 (59)	160 (49)	148 (45)	138 (42)
	30 amp	210 (64)	195 (59)	170 (52)	165 (50)
	40 amp	210 (64)	195 (59)	183 (56)	180 (55)
SLMCBL5240	10 amp	220 (67)	160 (49)	145 (44)	135 (41)
	15 amp	265 (81)	210 (64)	195 (59)	180 (55)
	20 amp	390 (119)	320 (98)	295 (90)	275 (84)
	30 amp	420 (128)	390 (119)	365 (111)	360 (110)
SLMCBL10120	10 amp	75 (23)	73 (22)	-	-
	15 amp	100 (31)	95 (29)	80 (24)	70 (21)
	20 amp	133 (41)	148 (45)	125 (38)	100 (31)
	30 amp	174 (53)	180 (55)	156 (48)	130 (40)
SLMCBL10240	10 amp	150 (46)	145 (44)	121 (37)	114 (35)
	15 amp	200 (61)	190 (58)	160 (49)	140 (43)
	20 amp	265 (81)	295 (90)	249 (76)	200 (61)
	30 amp	347 (106)	360 (110)	311 (95)	280 (85)
SLMCBL15120	10 amp	57 (17)	51 (16)	-	-
	15 amp	94 (29)	87 (27)	57 (17)	54 (17)
	20 amp	120 (37)	108 (33)	71 (22)	69 (21)
	30 amp	154 (47)	133 (41)	80 (24)	80 (24)
SLMCBL15240	10 amp	114 (35)	101 (31)	68 (21)	65 (20)
	15 amp	187 (57)	173 (53)	114 (35)	108 (33)
	20 amp	239 (73)	216 (66)	141 (43)	137 (42)
	30 amp	308 (94)	265 (81)	180 (55)	173 (53)
SLMCBL20120	10 amp	51 (16)	41 (13)	-	-
	15 amp	82 (25)	72 (22)	51 (16)	49 (15)
	20 amp	102 (31)	90 (27)	67 (20)	61 (19)
	30 amp	131 (40)	115 (35)	84 (26)	74 (23)
SLMCBL20240	10 amp	150 (46)	128 (39)	110 (34)	95 (29)
	15 amp	164 (50)	144 (44)	101 (31)	98 (30)
	20 amp	203 (62)	180 (55)	134 (41)	121 (37)
	30 amp	262 (80)	229 (70)	167 (51)	147 (45)
SLMCBL20240	10 amp	300 (91)	255 (78)	220 (67)	190 (58)

Note: Special consideration must be given for the circuit breaker due to the high initial in-rush currents.

Heat Output – Watts/Ft (Watts/m)



Outer Layer Options:

Product Type	Description	Nominal Dimensions [thickness x width] in (mm)	Shipping Weight: 500 ft (152 m) spool lbs (kg)	Purpose
SLMCBL-B	Tinned Copper Metal Braid	0.15 x 0.45 (3.8 x 11.4)	32 (15)	Dry Environments
SLMCBL-BP	Tinned Copper Metal Braid with Thermoplastic Elastomer Overjacket	0.23 x 0.54 (6.0 x 13.6)	37 (17)	Wet or Weak Chemical Environments
SLMCBL-BF	Tinned Copper Metal Braid with Fluoropolymer Overjacket	0.19 x 0.49 (4.8 x 12.4)	47 (21)	Wet or Harsh Chemical Environments

Voltage Adjustment Factors:

Product Type	Watt/ft Output Adjustment Factor	
	208 VAC	277 VAC
SLMCBL5240	0.84	1.20
SLMCBL10240	0.85	1.18
SLMCBL15240	0.91	1.09
SLMCBL20240	0.90	1.07

Product Type	Max Circuit Length Adjustment Factor	
	208 VAC	277 VAC
SLMCBL5240	0.95	1.04
SLMCBL10240	0.94	1.06
SLMCBL15240	0.91	1.10
SLMCBL20240	0.91	1.11

SELF-REGULATING HEATING CABLE

High-Temperature Self-Regulating Heating Cable (SLHCBL Series)

- ▶ **Ideal for freeze protection and high temperature process maintenance up to 248°F (120°C)**
- ▶ **Automatically adjusts heat output based on surface temperature**
- ▶ **Safe to overlap and insulate**
- ▶ **Can be cut-to-length and terminated in the field**
- ▶ **Moisture, chemical, and flame resistant**

Specifications:

Maximum Continuous Maintenance Temperature: 248°F (120°C)
Intermittent Exposure Temperature Range: -22°F to 392°F (-30°C to 200°C)
Nominal Power Output at 50°F (10°C): 5, 10, 15, 20 W/ft (15, 30, 45, 60 W/m)
Supply Voltages: 110-120 VAC or 208-277 VAC
Bus Wire Gauge: 16 AWG
Braid Resistance: Tinned copper 0.0055 ohms/ft (0.0182 ohms/m)
Bend Radius: 0.5 in (12 mm)



Ordering Information:

Part Number Matrix	SLHCBL	5	120	BF
Watts/ft:	5, 10, 15, 20			
Voltage:	120- (110-120 V), 240- (208-277 V)			
Outer Layer:	B- (Tinned Copper Metal Braid) BF- (Tinned Copper Metal Braid with Fluoropolymer Overjacket)			



Moisture and Chemical Resistant



Maintenance Temperatures Up to 248°F (120°C)

Complete Your System with:

Component	Starting at Page
Power Connection/Termination Kits 	1-17
Monitor Light Kits 	1-16
Insulation 	1-38
Temperature Controls 	8-1

SELF-REGULATING HEATING CABLE

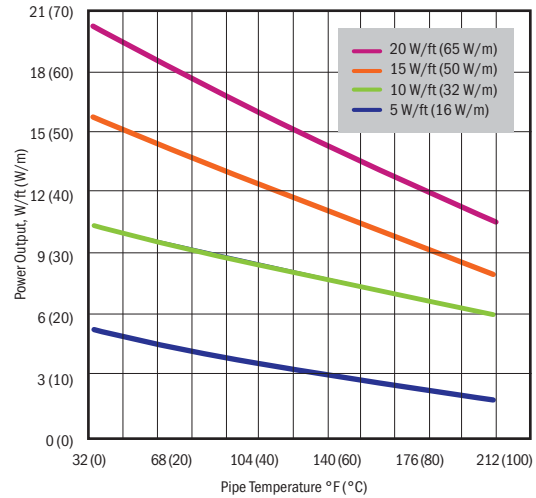
**High-Temperature Self-Regulating Heating Cable
(SLHCBL Series)**

Maximum Circuit Length in ft (m)

Heating Cable	Circuit Breaker Size	Start-up Temperature			
		50°F (10°C)	32°F (0°C)	-4°F (-20°C)	-40°F (-40°C)
SLHCBL5120	10 amp	120 (37)	110 (34)	105 (32)	90 (27)
	15 amp	180 (55)	175 (53)	158 (48)	143 (44)
	20 amp	240 (73)	215 (66)	190 (58)	180 (55)
	30 amp	259 (79)	245 (75)	240 (73)	225 (69)
	40 amp	266 (81)	255 (78)	250 (76)	240 (73)
SLHCBL5240	10 amp	240 (73)	220 (67)	210 (64)	180 (55)
	15 amp	360 (110)	350 (107)	315 (96)	285 (87)
	20 amp	479 (146)	430 (131)	380 (116)	360 (110)
	30 amp	518 (158)	490 (149)	480 (146)	450 (137)
	40 amp	531 (162)	510 (155)	500 (152)	480 (146)
SLHCBL10120	10 amp	73 (22)	69 (21)	65 (20)	58 (18)
	15 amp	118 (36)	110 (34)	98 (30)	88 (27)
	20 amp	148 (45)	140 (43)	130 (40)	118 (36)
	30 amp	220 (67)	200 (61)	182 (56)	175 (53)
	40 amp	255 (78)	240 (73)	220 (67)	230 (70)
SLHCBL10240	10 amp	146 (45)	138 (42)	130 (40)	116 (35)
	15 amp	236 (72)	220 (67)	195 (59)	175 (53)
	20 amp	295 (90)	280 (85)	260 (79)	235 (72)
	30 amp	440 (134)	400 (122)	364 (111)	350 (107)
	40 amp	510 (155)	480 (146)	440 (134)	460 (140)
SLHCBL15120	10 amp	50 (15)	47 (14)	42 (13)	40 (12)
	15 amp	75 (23)	65 (20)	63 (19)	60 (18)
	20 amp	100 (31)	90 (27)	83 (25)	80 (24)
	30 amp	143 (44)	135 (41)	125 (38)	120 (37)
	40 amp	190 (58)	175 (53)	168 (51)	160 (49)
SLHCBL15240	10 amp	100 (31)	93 (28)	83 (25)	80 (24)
	15 amp	150 (46)	130 (40)	125 (38)	120 (37)
	20 amp	200 (61)	180 (55)	165 (50)	160 (49)
	30 amp	285 (87)	270 (82)	250 (76)	240 (73)
	40 amp	380 (116)	350 (107)	335 (102)	320 (98)
SLHCBL20120	10 amp	39 (12)	33 (10)	34 (10)	32 (10)
	15 amp	58 (18)	55 (17)	50 (15)	48 (15)
	20 amp	75 (23)	71 (22)	68 (21)	63 (19)
	30 amp	115 (35)	105 (32)	100 (31)	95 (29)
	40 amp	153 (47)	143 (44)	133 (41)	125 (38)
SLHCBL20240	10 amp	77 (24)	70 (21)	67 (20)	63 (19)
	15 amp	115 (35)	110 (34)	100 (31)	95 (29)
	20 amp	150 (46)	142 (43)	135 (41)	125 (38)
	30 amp	230 (70)	210 (64)	200 (61)	190 (58)
	40 amp	306 (93)	286 (87)	265 (81)	250 (76)

Note: Special consideration must be given for the circuit breaker due to the high initial in-rush currents.

Heat Output — Watts/Ft (Watts/m)



Outer Layer Options:

Product Type	Description	Nominal Dimensions [thickness x width] in (mm)	Shipping Weight: 500 ft (152 m) spool lbs (kg)	Purpose
SLHCBL-B	Tinned Copper Metal Braid	0.15 x 0.45 (3.8 x 11.4)	38 (17)	Ordinary applications
SLHCBL-BF	Tinned Copper Metal Braid with Fluoropolymer Overjacket	0.19 x 0.49 (4.8 x 12.4)	47 (21)	For use in strong chemical environments (i.e. strong acids)

Voltage Adjustment Factors:

Watt/ft Output Adjustment Factor		
Product Type	208 VAC	277 VAC
SLHCBL5240	0.87	1.07
SLHCBL10240	0.88	1.08
SLHCBL15240	0.88	1.08
SLHCBL20240	0.86	1.07

Max Circuit Length Adjustment Factor		
Product Type	208 VAC	277 VAC
SLHCBL5240	0.99	1.08
SLHCBL10240	0.99	1.06
SLHCBL15240	0.98	1.06
SLHCBL20240	1.00	1.08

SELF-REGULATING HEATING CABLE

End of Circuit LED Monitor Light Kit

- ▶ **Super bright green LED light confirms at a glance your heat trace cable is energized**
- ▶ **Approved for ordinary and hazardous area locations**
- ▶ **Voltages up to 240VAC**

Benefits:

- Excellent visibility from all angles
- Easy-to-install — hot work permit not required for installation
- Easy re-entry for maintenance
- Compatible with up to 4 in (102 mm) of insulation and cladding

Specifications:

Maximum Voltage: 240 VAC

Maximum Current: 32 A

Lumen Output: 10 lumens

Construction: Non-conductive FRP plastic body

Overall Height: 8.2 in (208mm)

Maximum Continuous Exposure Temperature (T5): 212 °F (100 °C)

Ambient Exposure Temperature Range: -40 °F to 149 °F (-40 °C to 65 °C)

Ingress Protection Rating: IP66 / NEMA 4X



Ordinary Locations (with SLCBL, SLMCBL, and SLHCBL heating cables)
 Hazardous (Classified) Locations (with SLCBL heating cable only)
 Class I, Division 2, Groups A, B, C, D
 Class II, Division 2, Groups E, F, G
 Class III
 T5: 3,5,8 W/ft (10, 16, 26 W/m). T6: 10 W/ft (33 W/m)

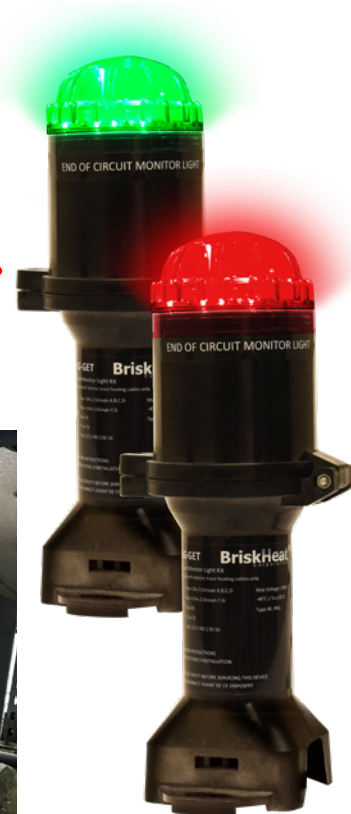
Approvals valid only when used with appropriate heating cable and installation accessories, and installed in accordance with all applicable instructions, codes, and regulations.

Ordering Information:

Part No.	Color	Compatible with	Enough to Complete	Kit Contents
JHE-LG-GET	Green	<ul style="list-style-type: none"> • SLCBL, SLMCBL, SLHCBL Heating Cable (CSA approved) 	One end of circuit LED monitor light end seal termination	<ul style="list-style-type: none"> • (1) End seal stand and light assembly with O-ring and grommet • (2) 16-14 insulated parallel splice crimp • (1) Silicone lead termination boot • (1) Rubber strain relief grommet • (1) Pipe strap — for 2 in to 6 in (51 mm to 152 mm) O.D. pipes • (1) End seal label
JHE-LR-GET	Red	<ul style="list-style-type: none"> • SLCAB, SLMCAB Heating Cable (Not CSA approved) 		

NEW!

Highly Visible Day or Night



Opens easily for light connection and maintenance



SELF-REGULATING HEATING CABLE

SLCBL, SLMCBL, SLHCBL Connection/Termination Kits

For use in Hazardous Area Locations with SLCBL cable only (CSA approved).

For use in non-hazardous area locations with SLCBL, SLMCBL, SLHCBL cable (non-CSA approved).



Approvals valid only when used with appropriate heating cable and installation accessories, and installed in accordance with all applicable instructions, codes, and regulations.

- Ordinary Locations
- Hazardous (Classified) Locations
- Class I, Division 2, Groups A, B, C, D
- Class II, Division 2, Groups E, F, G
- Class III
- SLCBL -BP, -BF series only



PTBS-GET Power Connection Kit with Multiple Entry Junction Box

NEW!

Benefits

- Installing three heating cables in one junction box saves installation time and money
- Terminal strip secures each wire separately for safe and easy wiring
- Compression fitting tightly secures to a range of power cords – 0.39 to 0.67 in (10 to 17 mm) diameter



JHE-GET Low-Profile End Seal Kit



JHT-GET Low-Profile Tee Connection Kit

Part No.	Kit	Compatible with	Enough to Complete	Kit Contents
PTBS-GET	Power Connection Kit with Multiple Entry Square Junction Box	SLCBL, SLMCBL, SLHCBL Heating Cable	One input connection for one heating cable. Up to three heating cables can be connected to this junction box with optional silicone frog leg expansion kits (sold separately)	<ul style="list-style-type: none"> • (1) Multiple entry junction box with rail mounted DIN terminal block electrical connections • (1) 3/4 in NPT pipe T-standoff (lower bracket) • (1) Pipe standoff strain relief (upper bracket) • (1) Lock nut • (1) Watertight sealing grommet • (2) Pipe straps – for 2 in to 6 in (51 mm to 152 mm) O.D. pipes • (1) Watertight sealing plug • (1) Silicone frog leg • (1) Green / yellow heat-shrink tube – 0.25 in x 6 in (6 mm x 150 mm) • (1) 0.34 oz (10 ml) tube of RTV sealant
PET-CA-P	Silicone Frog Leg Expansion Kit	SLCBL, SLMCBL, SLHCBL Heating Cable	Used for connecting additional heating cables to PTBS-GET. One expansion kit is required per heating cable	<ul style="list-style-type: none"> • (1) Silicone frog leg • (1) Green / yellow heat-shrink tube – 0.25 in x 6 in (6 mm x 150 mm) • (1) 0.34 oz (10 ml) tube of RTV sealant
JHE-GET	Low-Profile End Seal Kit	SLCBL, SLMCBL, SLHCBL Heating Cable	One low-profile end seal termination	<ul style="list-style-type: none"> • (1) End seal housing • (1) Watertight sealing grommet • (1) Pressure seal end with screws
JHS-GET	Low-Profile Splice Connection Kit	SLCBL, SLMCBL, SLHCBL Heating Cable	One low-profile splice connection	<ul style="list-style-type: none"> • (1) In-line splice housing • (2) Watertight sealing gaskets • (2) Housing covers with screws • (2) Watertight sealing grommets • (2) Pressure seal end with screws
JHT-GET	Low-Profile Tee Connection Kit	SLCBL, SLMCBL, SLHCBL Heating Cable	One low-profile tee connection NOTE: This kit does not complete an input power connection	<ul style="list-style-type: none"> • (1) Tee splice housing • (2) Watertight sealing gaskets • (2) Housing covers with screws • (3) Watertight sealing grommets • (3) Pressure seal end with screws

SELF-REGULATING HEATING CABLE

SLCBL Connection/Termination Kits

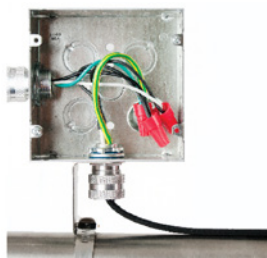
For use in ordinary locations with SLCBL cable only (UL approved).

For use in roof & gutter snow melting & de-icing applications with SLCBL cable only (UL approved).



Approvals valid only when used with appropriate heating cable and installation accessories, and installed in accordance with all applicable instructions, codes, and regulations.

Ordinary Locations



SLCBLUC Universal Connection Kit
(Junction Box sold separately)



SLCBLUC-GF
Ground Fault Power Connection Kit

Part No.	Kit	Compatible with	Enough to Complete	Kit Contents	Required Accessories
SLCBLUC	Power Connection Kit	SLCBL Heating Cable	One input connection and one end seal termination	<ul style="list-style-type: none"> (1) 1/2 in NPT seal fitting with strain relief and grommet (1) Standoff pipe mounting bracket (1) Lock nut (3) Wire nuts (1) Black heat-shrink tube – 0.5 in x 1 in (13 mm x 25 mm) (1) Green / yellow heat-shrink tube – 0.25 in x 6 in (6 mm x 150 mm) (2) Black heat-shrink tubes – 0.13 in x 5.5 in (3 mm x 140 mm) (1) Sealing gasket (2) Heat trace warning labels (2) De-icing snow melt caution labels (1) End seal 	<ul style="list-style-type: none"> (1) 1/2 in NPT junction box – with appropriate approvals* (1) Pipe strap <p>See page 1-35 for options</p>
SLCBLUC-GF	Ground Fault Power Connection Kit	SLCBL Heating Cable	One ground-fault protection input power connection	<ul style="list-style-type: none"> (1) Ground fault device with 120 VAC 3 prong plug (NEMA 5-15p)t (1) Black cloth tape (2) Mastic strips (2) Clamp ties (2) Crimp-on insulated terminals (1) Crimp-on non-insulated barrel (1) Heat-shrink tube – 0.75 in x 8 in (19 mm x 200 mm) (1) Heat-shrink tube – 0.75 in x 5 in (19 mm x 130 mm) (1) Heat-shrink tube – 0.13 in x 1 in (3 mm x 25 mm) (1) Heat-shrink tube – 0.50 in x 1 in (13 mm x 25 mm) (1) Heat-shrink tube – 0.31 in x 1.5 in (8 mm x 38 mm) (2) Heat trace warning labels (2) De-icing snow melt caution labels 	

* Heating cable with no outer jacket (type -B) requires a metallic junction box for proper grounding

SELF-REGULATING HEATING CABLE

SLCBL Connection/Termination Kits

For use in ordinary locations with SLCBL cable only (UL approved).

For use in roof & gutter snow melting & de-icing applications with SLCBL cable only (UL approved).



Ordinary Locations

Approvals valid only when used with appropriate heating cable and installation accessories, and installed in accordance with all applicable instructions, codes, and regulations.



SLCBLKC
End Seal Kit



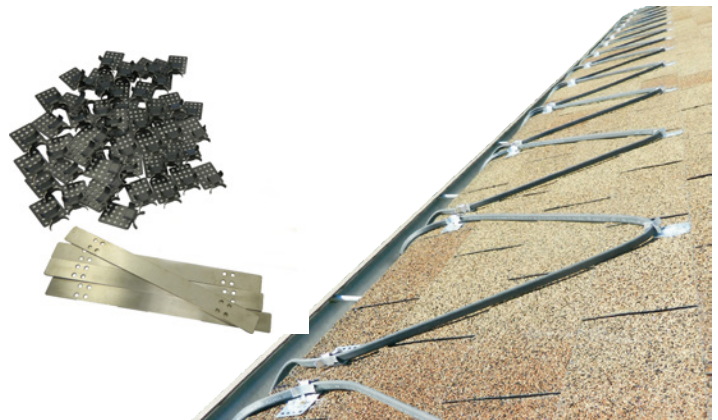
SLCBLSK
Splice and Tee Kit



Part No.	Kit	Compatible with	Enough to Complete	Kit Contents
SLCBLKC	End Seal Kit	SLCBL Heating Cable	Two end seal terminations	<ul style="list-style-type: none"> (2) Heat-shrink caps (2) Heat-shrink tubes – 0.75 in x 5 in (19 mm x 130 mm) (2) Woven braid sleeves – 0.50 in x 4 in (13 mm x 100 mm)
SLCBLSK	Splice and Tee Kit	SLCBL Heating Cable	<p>One splice connection and one end seal termination OR one tee connection and one end termination</p> <p>NOTE: This kit does not complete an input power connection</p>	<ul style="list-style-type: none"> (1) Clamp tie (3) Cable ties (1) Black cloth tape (5) Mastic strips (2) Heat-shrink caps (1) Black heat-shrink tube – 1 in x 8 in (25 mm x 200 mm) (3) Black heat-shrink tube – 0.5 in x 1 in (13 mm x 25 mm) (6) Black heat-shrink tubes – 0.13 in x 1 in (3 mm x 25 mm) (1) Heat shrink tube for ground (2) Crimp-on insulated terminals (1) Crimp-on non-insulated barrel (1) End seal

Roof and Gutter Accessories

Part Number	Description
SLCBL-RDOWN1	Aluminum Downspout Hanger Bracket
SLCBL-RCLIP10	Aluminum Roof Clips (10 pack)
SLCBL-RCLIP50	Aluminum Roof Clips (50 pack)
SLCBL-RCLIPMAG10	Magnetic Roof Clips (10 pack) — Ideal for metal roofs



Complete Roof and Gutter kits found on page 1-7